

<b>Estimated Procurement Breakdown &amp; Remaining Funds</b>	
HVAC Equipment Procurement (PO's in Place)	\$ 1,529,770
Siemens Clifford Equipment Costs	\$ 72,970
Siemens Kennedy Equipment Costs	\$ 145,940
Siemens Orion Equipment Costs	\$ 61,743
Estimated Orion Electrical Procurement	\$ 6,423
Estimated Clifford Electrical Procurement	\$ 68,633
Estimated Kennedy Electrical Procurement	\$ 72,263
Estimated Expedite Electrical	\$ 100,000
<b>Total Estimated Procurement</b>	<b>\$ 2,057,742</b>
<b>Original procurement Allowance</b>	<b>\$ 3,000,000</b>
<b>Subtract Estimated Procurement</b>	<b>\$ (2,057,742)</b>
Remaining Procurement Funds	\$ 942,258
<p>**These funds can be returned to district, held in the current precon location, or disbursed above to lower the total change order.</p>	
<p>Mark ups still need to be added to the values above. This will be completed on final PO calculations.</p>	

# Material

<b>Sales Person:</b>	<b>Christoph Schoenstein</b>	<b>Print Date:</b>	<b>14-Apr-2026</b>
<b>Estimate Name:</b>	<b>RCSD HVAC Upgrades PH2 CLS</b>	<b>Job Start:</b>	<b>05-Jun-2026</b>
<b>Estimate ID:</b>	<b>4a361384-9ec0-4473-a664-0a59a2f5d152</b>	<b>Job End:</b>	<b>31-Jul-2026</b>

QTY	Material Ref #	Description
117	DXR2.E18-101B	DXR2.E18 Room Automation Station
111	QBM81-3	METRIC! DIFF PRESS SWITCH (20-300 Pa)
123	RIBU1C	RIB 120VAC 24VAC/DC SPDT
14	QAM2030.020	DUCT POINT TEMP, 10K OHM TYPE 2, 8"
126	QMX3.P74-1WSB	QMX3 ROOM TMP, RH & CO2, DISP (COO=USA)
126	550-002	ENCLOSURE ASSY,TEC
117	A7F30048853	Xfrmr 120/24 100VA W/CB w/ 20" Leads
222	GMA151.1P	ACTUATOR, SR, 2-10V,62 LB-IN,PLENUM
111	A7F30011256	H300 MICRO-SPLITCORE GO/NO GO .15-60Amps
14	A7F30133236	PIR CEILING MOUNT SENSOR 24 VDC
204	QAM2030.010	DUCT POINT TEMP, 10K OHM TYPE 2, 4"
9	DXR2.E10PL-102B	DXR2.E10PL Room AS GLB Actuator
2	PXC5.E24.A	PXC5.E24.A COMPACT 24PT, BACNET, Desigo
2	PXA-ENC34	ENCLOSURE ASSY 34
2	PXA-SB115V192VA	SERVICE BOX 115V, 24VAC, 192VA
1	P55802-Y157-A412	CC ADD 100 BA DP
1	P55802-Y157-A452	CC ADD 500 BA DP

# RWC Kennedy School – 4/13/26

## **EQUIPMENT SUMMARY & SELLING POLICY**

1. Quote is valid for 30 days.
2. Lead times are estimates only and are subject to change without notice.
3. Standard ground freight charges are prepaid and included in all orders over \$1,250.00
4. Orders under \$1,250.00 are subject to potential freight charges
5. Freight terms: FOB Point of Shipment
6. Quote does NOT include any startup, testing, or short circuit studies unless otherwise noted
7. Quote does NOT include fuses unless otherwise noted
8. All sales per CED Terms & Conditions: <http://sales.our-terms.com/>
  - Take special note of Section 8 while considering the potential impact of government-imposed tariffs
9. Quoted expedites are valid for 3 working days. PO with formal release must be provided prior to expedite expiration otherwise price & lead time are subject to change
10. All prices shown do NOT include tax

**FOB Jobsite is available on all orders for a 2% adder**

**\*\*\*PLEASE REVIEW STANDARD LEAD TIMES, ADVISE IF EXPEDITES ARE REQUIRED\*\*\***

<u>Equipment</u>	<u>Lead Time After Release</u> (Transit Time NOT Included)
Panelboards	<b>10-12 Weeks</b>

**Net Contractor Pricing: \$72,263.00**

Job is quoted:

- Per Plan Drawings and Spec Sections  
Comments and special conditions as noted.
- Per Plans Only – No Specs
- Per Customer's Take Off – Verbal
- Per Customer's Take Off – Written
- Other:

**Tony Sunzeri**  
**CED Contractors**  
**Switchgear Project Manager**  
**408-418-2794**  
[tsunzeri@yourced.com](mailto:tsunzeri@yourced.com)



Seq #	Qty	Product Description
1	1	<p><b>Designation : MA</b>  <b>Product Details:</b>            1 - NF MB Panel (INTERIOR)-NF Panelboard            Consisting of            208Y/120V 3Ph 4W 60Hz SCCR: 42kA            Fully Rated            Single Main: 200A/3P JG Circuit Breaker            Branch Neutral Lug Material: Aluminum            Incoming Conductors: 1 - 3/0 - 350 kcmil            Bus: 250A Rated Copper: Silver Plated            CU Ground Bar            42 Circuit Interior            Type 3R/5/12Box: 56H x 20W x 6.5D            Incoming: Bottom Trim w/ Box            Box Cat No: MH56WP            Ref. Drawing: PBA555            Feeders:            8 - 30A/2P EGB            8 - 20A/3P EGB            Optional Features:            Standard Panel (Box Ahead),Copper Solid            Neutral,Seismic Qualification -            IBC/ASCE7/CBC/NBCC,Copper Ground Bar            Branch User Placement            Standard Nameplate:            Engraved as Follows            Line 1: MA            Size: 3.50" Wide x 1.00" High (Std)            Color: White Surface / Black Letters            Plastic/Adhesive - Screw-on            1 - MH56WP-PANELBOARD ENCL/BOX TYPE 3R/12 56H 20W</p>

Seq #	Qty	Product Description
2	1	<p><b>Designation : MB</b>  <b>Product Details:</b>            1 - NF MB Panel (INTERIOR)-NF Panelboard            Consisting of            208Y/120V 3Ph 4W 60Hz SCCR: 42kA            Fully Rated            Single Main: 200A/3P JG Circuit Breaker            Branch Neutral Lug Material: Aluminum            Incoming Conductors: 1 - 3/0 - 350 kcmil            Bus: 250A Rated Copper: Silver Plated            CU Ground Bar            30 Circuit Interior            Type 3R/5/12Box: 50H x 20W x 6.5D            Incoming: Bottom Trim w/ Box            Box Cat No: MH50WP            Ref. Drawing: PBA555            Feeders:            2 - 70A/3P EGB            1 - 80A/3P EGB            9 - 20A/1P EGB            Optional Features:            Standard Panel (Box Ahead),Copper Solid            Neutral,Seismic Qualification -            IBC/ASCE7/CBC/NBCC,Copper Ground Bar            Branch User Placement            Standard Nameplate:            Engraved as Follows            Line 1: MB            Size: 3.50" Wide x 1.00" High (Std)            Color: White Surface / Black Letters            Plastic/Adhesive - Screw-on            1 - MH50WP-PANELBOARD ENCL/BOX TYPE 3R/12 50H 20W</p>

Seq #	Qty	Product Description
3	1	<p><b>Designation : MC</b>  <b>Product Details:</b>            1 - NF MB Panel (INTERIOR)-NF Panelboard            Consisting of            208Y/120V 3Ph 4W 60Hz SCCR: 42kA            Fully Rated            Single Main: 150A/3P JG Circuit Breaker            Branch Neutral Lug Material: Copper            Main Acc: Cu Mechanical Lugs Cu Cable            Incoming Conductors: 1 - 1/0 -300 kcmil            Bus: 250A Rated Copper: Silver Plated            CU Ground Bar            30 Circuit Interior            Type 3R/5/12Box: 50H x 20W x 6.5D            Incoming: Bottom Trim w/ Box            Box Cat No: MH50WP            Ref. Drawing: PBA555            Feeders:            5 - 30A/2P EGB            5 - 20A/3P EGB            1 - 25A/2P EGB            1 - 15A/1P EGB            2 - 20A/1P EGB            Optional Features:            Standard Panel (Box Ahead),Copper Solid            Neutral,Seismic Qualification -            IBC/ASCE7/CBC/NBCC,Copper Ground Bar            Branch User Placement            Standard Nameplate:            Engraved as Follows            Line 1: MC            Size: 3.50" Wide x 1.00" High (Std)            Color: White Surface / Black Letters            Plastic/Adhesive - Screw-on            1 - MH50WP-PANELBOARD ENCL/BOX TYPE 3R/12 50H 20W</p>

Seq #	Qty	Product Description
4	1	<p><b>Designation : MD</b>  <b>Product Details:</b>            1 - NF MB Panel (INTERIOR)-NF Panelboard            Consisting of            208Y/120V 3Ph 4W 60Hz SCCR: 42kA            Fully Rated            Single Main: 150A/3P JG Circuit Breaker            Branch Neutral Lug Material: Copper            Main Acc: Cu Mechanical Lugs Cu Cable            Incoming Conductors: 1 - 1/0 -300 kcmil            Bus: 250A Rated Copper: Silver Plated            CU Ground Bar            30 Circuit Interior            Type 3R/5/12Box: 50H x 20W x 6.5D            Incoming: Bottom Trim w/ Box            Box Cat No: MH50WP            Ref. Drawing: PBA555            Feeders:            5 - 30A/2P EGB            5 - 20A/3P EGB            Optional Features:            Standard Panel (Box Ahead),Copper Solid            Neutral,Seismic Qualification -            IBC/ASCE7/CBC/NBCC,Copper Ground Bar            Branch User Placement            Standard Nameplate:            Engraved as Follows            Line 1: MD            Size: 3.50" Wide x 1.00" High (Std)            Color: White Surface / Black Letters            Plastic/Adhesive - Screw-on            1 - MH50WP-PANELBOARD ENCL/BOX TYPE 3R/12 50H 20W</p>

Seq #	Qty	Product Description
5	1	<p><b>Designation : ME</b>  <b>Product Details:</b>            1 - NF MB Panel (INTERIOR)-NF Panelboard            Consisting of            208Y/120V 3Ph 4W 60Hz SCCR: 42kA            Fully Rated            Single Main: 100A/3P HG Circuit Breaker            Branch Neutral Lug Material: Copper            Main Acc: Cu Mechanical Lugs Cu Cable            Incoming Conductors: 1 - #14 - 2/0 AWG            Bus: 125A Rated Copper: Silver Plated            CU Ground Bar            30 Circuit Interior            Type 3R/5/12Box: 44H x 20W x 6.5D            Incoming: Bottom Trim w/ Box            Box Cat No: MH44WP            Ref. Drawing: PBA555            Feeders:            4 - 30A/2P EGB            4 - 20A/3P EGB            Optional Features:            Standard Panel (Box Ahead),Copper Solid            Neutral,Seismic Qualification -            IBC/ASCE7/CBC/NBCC,Copper Ground Bar            Branch User Placement            Standard Nameplate:            Engraved as Follows            Line 1: ME            Size: 3.50" Wide x 1.00" High (Std)            Color: White Surface / Black Letters            Plastic/Adhesive - Screw-on            1 - MH44WP-PANELBOARD ENCL/BOX TYPE 3R/12 44H 20W</p>

Seq #	Qty	Product Description
6	1	<p><b>Designation : MG</b>  <b>Product Details:</b>            1 - NF MB Panel (INTERIOR)-NF Panelboard            Consisting of            208Y/120V 3Ph 4W 60Hz SCCR: 42kA            Fully Rated            Single Main: 150A/3P JG Circuit Breaker            Branch Neutral Lug Material: Copper            Main Acc: Cu Mechanical Lugs Cu Cable            Incoming Conductors: 1 - 1/0 -300 kcmil            Bus: 250A Rated Copper: Silver Plated            CU Ground Bar            30 Circuit Interior            Type 3R/5/12Box: 50H x 20W x 6.5D            Incoming: Top Trim w/ Box            Box Cat No: MH50WP            Ref. Drawing: PBA555            Feeders:            4 - 30A/2P EGB            2 - 20A/3P EGB            1 - 30A/3P EGB            1 - 35A/3P EGB            Optional Features:            Standard Panel (Box Ahead),Copper Solid            Neutral,Seismic Qualification -            IBC/ASCE7/CBC/NBCC,Copper Ground Bar            Branch User Placement            Standard Nameplate:            Engraved as Follows            Line 1: MG            Size: 3.50" Wide x 1.00" High (Std)            Color: White Surface / Black Letters            Plastic/Adhesive - Screw-on            1 - MH50WP-PANELBOARD ENCL/BOX TYPE 3R/12 50H 20W</p>

Seq #	Qty	Product Description
7	1	<p><b>Designation : MI</b>  <b>Product Details:</b>            1 - NF MB Panel (INTERIOR)-NF Panelboard            Consisting of            208Y/120V 3Ph 4W 60Hz SCCR: 42kA            Fully Rated            Single Main: 150A/3P JG Circuit Breaker            Branch Neutral Lug Material: Copper            Main Acc: Cu Mechanical Lugs Cu Cable            Incoming Conductors: 1 - 1/0 -300 kcmil            Bus: 250A Rated Copper: Silver Plated            CU Ground Bar            30 Circuit Interior            Type 3R/5/12Box: 50H x 20W x 6.5D            Incoming: Top Trim w/ Box            Box Cat No: MH50WP            Ref. Drawing: PBA555            Feeders:            5 - 30A/2P EGB            5 - 20A/3P EGB            Optional Features:            Standard Panel (Box Ahead),Copper Solid            Neutral,Seismic Qualification -            IBC/ASCE7/CBC/NBCC,Copper Ground Bar            Branch User Placement            Standard Nameplate:            Engraved as Follows            Line 1: MI            Size: 3.50" Wide x 1.00" High (Std)            Color: White Surface / Black Letters            Plastic/Adhesive - Screw-on            1 - MH50WP-PANELBOARD ENCL/BOX TYPE 3R/12 50H 20W</p>

Seq #	Qty	Product Description
8	1	<p><b>Designation : MH</b>  <b>Product Details:</b>            1 - NF MB Panel (INTERIOR)-NF Panelboard            Consisting of            208Y/120V 3Ph 4W 60Hz SCCR: 42kA            Fully Rated            Single Main: 150A/3P JG Circuit Breaker            Branch Neutral Lug Material: Copper            Main Acc: Cu Mechanical Lugs Cu Cable            Incoming Conductors: 1 - 1/0 -300 kcmil            Bus: 250A Rated Copper: Silver Plated            CU Ground Bar            30 Circuit Interior            Type 3R/5/12Box: 50H x 20W x 6.5D            Incoming: Top Trim w/ Box            Box Cat No: MH50WP            Ref. Drawing: PBA555            Feeders:            4 - 30A/2P EGB            4 - 20A/3P EGB            1 - 25A/2P EGB            1 - 15A/1P EGB            Optional Features:            Standard Panel (Box Ahead),Copper Solid            Neutral,Seismic Qualification -            IBC/ASCE7/CBC/NBCC,Copper Ground Bar            Branch User Placement            Standard Nameplate:            Engraved as Follows            Line 1: MH            Size: 3.50" Wide x 1.00" High (Std)            Color: White Surface / Black Letters            Plastic/Adhesive - Screw-on            1 - MH50WP-PANELBOARD ENCL/BOX TYPE 3R/12 50H 20W</p>

Seq #	Qty	Product Description
9	1	<p><b>Designation : MK</b>  <b>Product Details:</b>            1 - NF MB Panel (INTERIOR)-NF Panelboard            Consisting of            208Y/120V 3Ph 4W 60Hz SCCR: 42kA            Fully Rated            Single Main: 250A/3P JG Circuit Breaker            Branch Neutral Lug Material: Aluminum            Incoming Conductors: 1 - 3/0 - 350 kcmil            Bus: 250A Rated Copper: Silver Plated            CU Ground Bar            54 Circuit Interior            Type 3R/5/12Box: 62H x 20W x 6.5D            Incoming: Bottom Trim w/ Box            Box Cat No: MH62WP            Ref. Drawing: PBA555            Feeders:            10 - 30A/2P EGB            10 - 20A/3P EGB            Optional Features:            Standard Panel (Box Ahead),Copper Solid            Neutral,Seismic Qualification -            IBC/ASCE7/CBC/NBCC,Copper Ground Bar            Branch User Placement            Standard Nameplate:            Engraved as Follows            Line 1: MK            Size: 3.50" Wide x 1.00" High (Std)            Color: White Surface / Black Letters            Plastic/Adhesive - Screw-on            1 - MH62WP-PNLBD ENCLOSURE/BOX T-3R/12 62H 20W</p>

Seq #	Qty	Product Description
10	1	<p><b>Designation : MP</b>  <b>Product Details:</b>            1 - NF MB Panel (INTERIOR)-NF Panelboard            Consisting of            208Y/120V 3Ph 4W 60Hz SCCR: 42kA            Fully Rated            Single Main: 100A/3P HG Circuit Breaker            Branch Neutral Lug Material: Copper            Main Acc: Cu Mechanical Lugs Cu Cable            Incoming Conductors: 1 - #14 - 2/0 AWG            Bus: 125A Rated Copper: Silver Plated            CU Ground Bar            42 Circuit Interior            Type 3R/5/12Box: 50H x 20W x 6.5D            Incoming: Bottom Trim w/ Box            Box Cat No: MH50WP            Ref. Drawing: PBA555            Feeders:            4 - 30A/2P EGB            4 - 20A/3P EGB            1 - 25A/2P EGB            9 - 20A/1P EGB            Optional Features:            Standard Panel (Box Ahead),Copper Solid            Neutral,Seismic Qualification -            IBC/ASCE7/CBC/NBCC,Copper Ground Bar            Branch User Placement            Standard Nameplate:            Engraved as Follows            Line 1: MP            Size: 3.50" Wide x 1.00" High (Std)            Color: White Surface / Black Letters            Plastic/Adhesive - Screw-on            1 - MH50WP-PANELBOARD ENCL/BOX TYPE 3R/12 50H 20W</p>

Seq #	Qty	Product Description
11	1	<p><b>Designation : M2</b></p> <p><b>Product Details:</b></p> <p>1 - I-Line MB Panel (INTERIOR)-I-Line Panelboard            Consisting of            208Y/120V 3Ph 4W 60Hz SCCR: 42kA            Fully Rated            Single Main: 400A/3P LA Circuit Breaker            Branch Neutral Lug Material: Aluminum            Incoming Conductors: 1 - #1 - 600,(2)#1 - 250            kcmil            Bus: 400A Rated Copper: Silver Plated            CU Ground Bar            45" of Mounting Inches            Type 3R/5/12Box: 73H x 32W x 11.75D            Incoming: Bottom Trim w/ Box            Box Cat No: HCJ3273WP            Ref. Drawing PBA475 Type: HCJ            Feeders:            3 - 150A/3P QG            1 - 50A/2P BG            Optional Features:            Standard Panel (Box Ahead),Copper Solid            Neutral,Seismic Qualification -            IBC/ASCE7/CBC/NBCC,Copper Ground            Bar,Standard Mains and Feeders            Mechanically Restrained            Branch User Placement            Special Equipment Nameplate:            Engraved as Follows            Line 1: M2            Line 2: 400A 120/208V, 3PH            Size: 3.50" Wide x 1.00" High (Std)            Color: White Surface / Black Letters            Plastic/Adhesive - Screw-on            1 - HCJ3273WP-HCJ 32 x 73 inch Type 3R enclosure</p>

REV	DESCRIPTION	BY	DATE				
-	----	---	---/---/---	-	----	---	---/---/---

CKT NO	ACCESSORIES	TYPE	RATING AMP/P			RATING AMP/P	TYPE	ACCESSORIES	CKT NO	
1		EGB	30/2			30/2	EGB		2	
3										4
5		EGB	30/2				30/2	EGB		6
7										8
9		EGB	30/2				30/2	EGB		10
11										12
13		EGB	30/2				30/2	EGB		14
15										16
17										18
19		EGB	20/3				20/3	EGB		20
21										22
23										24
25		EGB	20/3				20/3	EGB		26
27										28
29										30
31		EGB	20/3				20/3	EGB		32
33										34
35										36
37		EGB	20/3				20/3	EGB		38
39										40
41	BLANK								BLANK	42

**PHYSICAL DATA**

ENCLOSURE Type 3R/5/12  
 FRONT CAT#: Trim w/Box  
 BOX CAT#: MH56WP

DIMENSIONS:  
 56"(1422mm)Hx20"(508mm)Wx6.5"(165mm)D

WIRE BENDING SPACE:  
 TOP - 5"(127)mm  
 BOTTOM - 12.75"(324)mm  
 SIDE - 4.1"(105)mm

PBA: 555  
 Branch Neutral Lug Material: Aluminum  
 BUSSING: 250A RATED COPPER BUS  
 Silver Plated

OPTIONAL FEATURES:  
 SEISMICALLY QUALIFIED: IBC/ASCE7/CBC/NBCC  
 BRANCH USER PLACEMENT  
 Copper GROUND BAR  
 COPPER SOLID NEUTRAL  
 Maximum Panel Weight 193.  
 Depth Center of Gravity 6.5  
 Elevation Center of Gravity 28.0  
 Vertical Center of Gravity 10.0

---STANDARD EQUIPMENT NAMEPLATE---

Engraved as Follows  
 LINE 1: MA  
 (Continued on next page.)

**ELECTRICAL DATA**

SYSTEM: 208Y/120V 3Ph 4W 60Hz  
 System Ampacity: 200A  
 42kA SYMS. SCCR  
 Fully Rated

MAIN: MAIN BREAKER JG 200A  
 Bottom FEED  
 65kA AIR  
 INCOMING CONDUCTORS(S) PER NEC, CEC, NOM:  
 Wire Bending Space:  
 Phase Lugs:1 - 3/0 - 350 kcmil  
 Neutral Lugs: 1- (1) #6-350 KCMIL

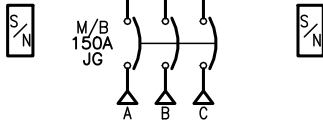
-----BRANCH SUMMATION-----  
 8 - 30A/2P EGB                      8 - 20A/3P EGB

JOB NAME: Kennedy School	EQUIPMENT DESIGNATION: MA
JOB LOCATION:	EQUIPMENT TYPE: NF (Circuit Breaker Type) PANEL 1 OF 1
DRAWN BY: CAD	DRAWING TYPE: ONE LINE DIAGRAM
ENGR:	
DATE: April 10 2026	
DRAWING STATUS: QUOTE	DWG# OQ-6895526-214691587-01   PG 1 OF 2   REV -



REV	DESCRIPTION	BY	DATE	-	----	--	---/---/---
-	----	---	---/---/---	-	----	--	---/---/---

CKT NO	ACCESSORIES	TYPE	RATING AMP/P			RATING AMP/P	TYPE	ACCESSORIES	CKT NO	
1		EGB	30/2			30/2	EGB		2	
3										4
5		EGB	30/2				30/2	EGB		6
7										8
9		EGB	30/2							10
11										12
13							20/3	EGB		14
15		EGB	20/3							16
17							20/3	EGB		18
19										20
21		EGB	20/3							22
23							25/2	EGB		24
25							15/1	EGB		26
27		EGB	20/3				20/1	EGB		28
29							20/1	EGB		30



PHYSICAL DATA

ENCLOSURE Type 3R/5/12  
FRONT CAT#: Trim w/Box  
BOX CAT#: MH50WP

DIMENSIONS:  
50"(1270mm)Hx20"(508mm)Wx6.5"(165mm)D  
WIRE BENDING SPACE:  
TOP - 5"(127)mm  
BOTTOM - 12.75"(324)mm  
SIDE - 4.1"(105)mm  
PBA: 555

Branch Neutral Lug Material: Copper  
BUSSING: 250A RATED COPPER BUS  
Silver Plated

OPTIONAL FEATURES:  
SEISMICALLY QUALIFIED: IBC/ASCE7/CBC/NBCC  
BRANCH USER PLACEMENT  
Copper GROUND BAR  
COPPER MAIN LUGS MECHANICAL  
COPPER SOLID NEUTRAL  
Maximum Panel Weight 172.  
Depth Center of Gravity 6.5  
Elevation Center of Gravity 25.0  
Vertical Center of Gravity 10.0

----STANDARD EQUIPMENT NAMEPLATE----  
Engraved as Follows  
(Continued on next page.)

ELECTRICAL DATA

SYSTEM: 208Y/120V 3Ph 4W 60Hz  
System Ampacity: 150A  
42kA SYMS. SCCR  
Fully Rated  
MAIN: MAIN BREAKER JG 150A  
Bottom FEED  
65kA AIR  
INCOMING CONDUCTORS(S) PER NEC, CEC, NOM:  
Wire Bending Space:  
Phase Lugs:1 - 1/0 -300 kcmil  
Neutral Lugs: 1- (1) #6-250 KCMIL

-----BRANCH SUMMATION-----

5 - 30A/2P EGB	5 - 20A/3P EGB
1 - 25A/2P EGB	1 - 15A/1P EGB
2 - 20A/1P EGB	

JOB NAME: Kennedy School	EQUIPMENT DESIGNATION: MC
JOB LOCATION:	EQUIPMENT TYPE: NF (Circuit Breaker Type) PANEL 1 OF 1
DRAWN BY: CAD	DRAWING TYPE: ONE LINE DIAGRAM
ENGR:	
DATE: April 10 2026	
DRAWING STATUS: QUOTE	DWG# 00-6895526-214691589-01 PG 1 OF 2 REV -

REV	DESCRIPTION	BY	DATE	-	----	--	---/---/---
-	----	---	---/---/---	-	----	--	---/---/---

CKT NO	ACCESSORIES	TYPE	RATING AMP/P		RATING AMP/P	TYPE	ACCESSORIES	CKT NO
1		EGB	30/2		30/2	EGB		2
3					30/2	EGB		4
5		EGB	30/2		30/2	EGB		6
7					30/2	EGB		8
9		EGB	30/2		20/3	EGB		10
11					20/3	EGB		12
13					20/3	EGB		14
15		EGB	20/3		20/3	EGB		16
17					20/3	EGB		18
19								20
21		EGB	20/3				BLANK	22
23							BLANK	24
25							BLANK	26
27		EGB	20/3				BLANK	28
29							BLANK	30

### PHYSICAL DATA

ENCLOSURE Type 3R/5/12  
FRONT CAT#: Trim w/Box  
BOX CAT#: MH50WP

#### DIMENSIONS:

50"(1270mm)Hx20"(508mm)Wx6.5"(165mm)D

#### WIRE BENDING SPACE:

TOP - 5"(127)mm  
BOTTOM - 12.75"(324)mm  
SIDE - 4.1"(105)mm

PBA: 555

Branch Neutral Lug Material: Copper

BUSSING: 250A RATED COPPER BUS

Silver Plated

#### OPTIONAL FEATURES:

SEISMICALLY QUALIFIED: IBC/ASCE7/CBC/NBCC

BRANCH USER PLACEMENT

Copper GROUND BAR

COPPER MAIN LUGS MECHANICAL

COPPER SOLID NEUTRAL

Maximum Panel Weight 172.

Depth Center of Gravity 6.5

Elevation Center of Gravity 25.0

Vertical Center of Gravity 10.0

----STANDARD EQUIPMENT NAMEPLATE----

Engraved as Follows

(Continued on next page.)

### ELECTRICAL DATA

SYSTEM: 208Y/120V 3Ph 4W 60Hz

System Ampacity: 150A

42kA SYMS. SCCR

Fully Rated

MAIN: MAIN BREAKER JG 150A

Bottom FEED

65kA AIR

INCOMING CONDUCTORS(S) PER NEC, CEC, NOM:

Wire Bending Space:


Phase Lugs: 1 - 1/0 -300 kcmil

Neutral Lugs: 1 - (1) #6-250 KCMIL

-----BRANCH SUMMATION-----

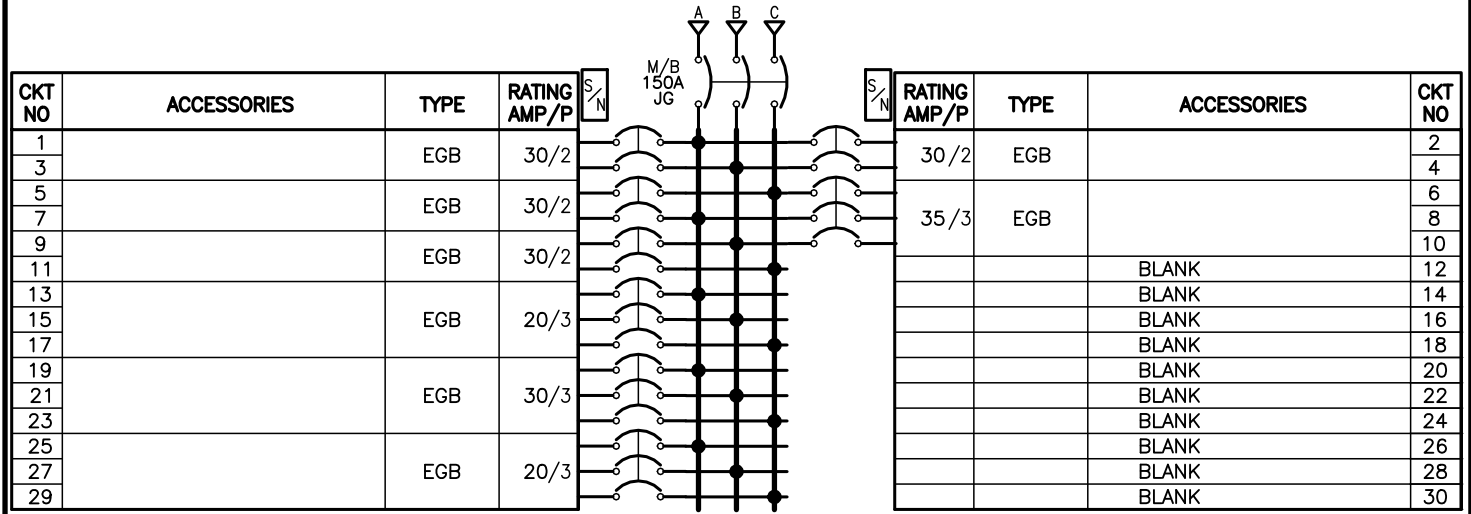
5 - 30A/2P EGB

5 - 20A/3P EGB

JOB NAME:	Kennedy School	EQUIPMENT DESIGNATION:	MD
JOB LOCATION:		EQUIPMENT TYPE:	NF (Circuit Breaker Type) PANEL 1 OF 1
DRAWN BY:	CAD	DRAWING TYPE:	ONE LINE DIAGRAM
ENGR:		 <small>by Schneider Electric</small>	
DATE:	April 10 2026	DWG#	0Q-6895526-214691590-01
DRAWING STATUS:	QUOTE	PG 1	OF 2 REV -



REV	DESCRIPTION	BY	DATE	-	----	--	---/---/---
-	----	--	---/---/---	-	----	--	---/---/---



PHYSICAL DATA

ENCLOSURE Type 3R/5/12  
 FRONT CAT#: Trim w/Box  
 BOX CAT#: MH50WP

DIMENSIONS:  
 50"(1270mm)Hx20"(508mm)Wx6.5"(165mm)D  
 WIRE BENDING SPACE:  
 TOP - 12.75"(324)mm  
 BOTTOM - 5"(127)mm  
 SIDE - 4.1"(105)mm  
 PBA: 555

Branch Neutral Lug Material: Copper  
 BUSSING: 250A RATED COPPER BUS  
 Silver Plated

OPTIONAL FEATURES:  
 SEISMICALLY QUALIFIED: IBC/ASCE7/CBC/NBCC  
 BRANCH USER PLACEMENT  
 Copper GROUND BAR  
 COPPER MAIN LUGS MECHANICAL  
 COPPER SOLID NEUTRAL  
 Maximum Panel Weight 172.  
 Depth Center of Gravity 6.5  
 Elevation Center of Gravity 25.0  
 Vertical Center of Gravity 10.0


---STANDARD EQUIPMENT NAMEPLATE---  
 Engraved as Follows  
 (Continued on next page.)

ELECTRICAL DATA

SYSTEM: 208Y/120V 3Ph 4W 60Hz  
 System Ampacity: 150A  
 42kA SYMS. SCCR  
 Fully Rated

MAIN: MAIN BREAKER JG 150A  
 Top FEED  
 65kA AIR  
 INCOMING CONDUCTORS(S) PER NEC, CEC, NOM:  
 Wire Bending Space:  
 Phase Lugs:1 - 1/0 -300 kcmil  
 Neutral Lugs: 1- (1) #6-250 KCMIL

-----BRANCH SUMMATION-----  
 4 - 30A/2P EGB                      2 - 20A/3P EGB  
 1 - 30A/3P EGB                      1 - 35A/3P EGB

JOB NAME:	Kennedy School	EQUIPMENT DESIGNATION:	MG
JOB LOCATION:		EQUIPMENT TYPE:	NF (Circuit Breaker Type) PANEL 1 OF 1
DRAWN BY:	CAD	DRAWING TYPE:	ONE LINE DIAGRAM
ENGR:		<b>SQUARE</b> 	
DATE:	April 10 2026	<small>by Schneider Electric</small>	
DRAWING STATUS:	QUOTE	DWG#	0Q-6895526-214691592-01
		PG 1	OF 2
		REV	-

REV	DESCRIPTION	BY	DATE				
-	----	---	---/---/---	-	----	---	---/---/---

CKT NO	ACCESSORIES	TYPE	RATING AMP/P	S/N	M/B 150A JG	A	B	C	S/N	RATING AMP/P	TYPE	ACCESSORIES	CKT NO	
1		EGB	30/2							20/3	EGB		2	
3														4
5		EGB	30/2											6
7														8
9		EGB	30/2								20/3	EGB		10
11														12
13		EGB	30/2											14
15											20/3	EGB		16
17		EGB	30/2											18
19														20
21	BLANK									20/3	EGB		22	
23	BLANK												24	
25	BLANK												26	
27	BLANK									20/3	EGB		28	
29	BLANK												30	

PHYSICAL DATA

ENCLOSURE Type 3R/5/12  
 FRONT CAT#: Trim w/Box  
 BOX CAT#: MH50WP

DIMENSIONS:  
 50"(1270mm)Hx20"(508mm)Wx6.5"(165mm)D  
 WIRE BENDING SPACE:  
 TOP - 12.75"(324)mm  
 BOTTOM - 5"(127)mm  
 SIDE - 4.1"(105)mm  
 PBA: 555

Branch Neutral Lug Material: Copper  
 BUSSING: 250A RATED COPPER BUS  
 Silver Plated

OPTIONAL FEATURES:  
 SEISMICALLY QUALIFIED: IBC/ASCE7/CBC/NBCC  
 BRANCH USER PLACEMENT  
 Copper GROUND BAR  
 COPPER MAIN LUGS MECHANICAL  
 COPPER SOLID NEUTRAL  
 Maximum Panel Weight 172.  
 Depth Center of Gravity 6.5  
 Elevation Center of Gravity 25.0  
 Vertical Center of Gravity 10.0

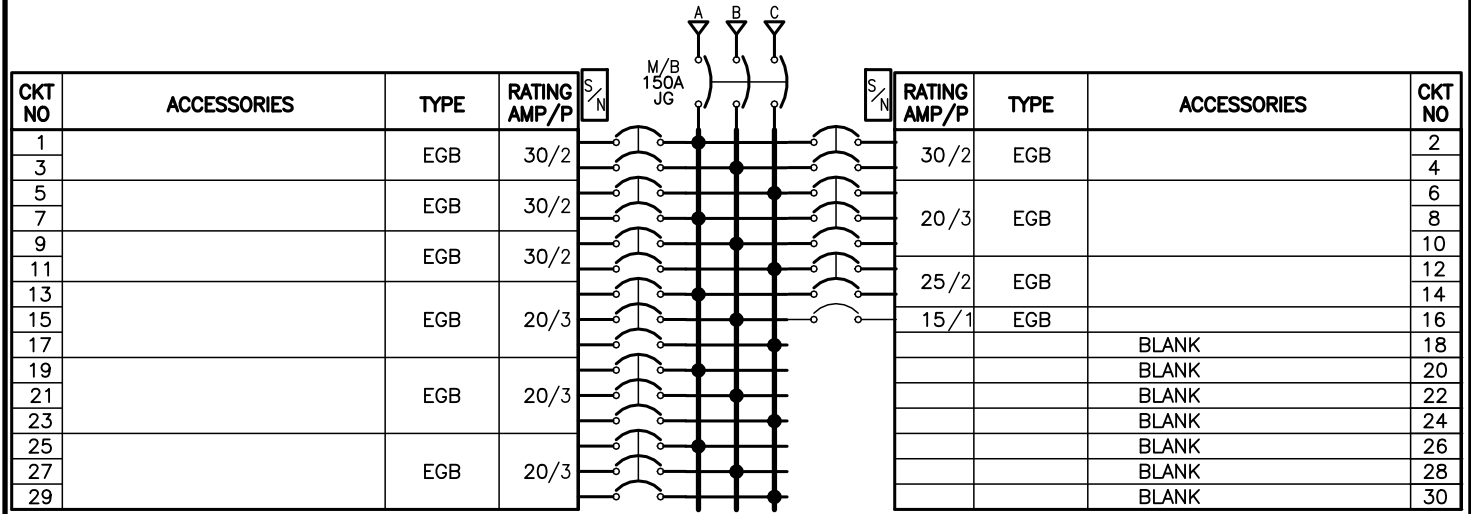
---STANDARD EQUIPMENT NAMEPLATE---  
 Engraved as Follows  
 (Continued on next page.)

ELECTRICAL DATA

SYSTEM: 208Y/120V 3Ph 4W 60Hz  
 System Ampacity: 150A  
 42kA SYMS. SCCR  
 Fully Rated  
 MAIN: MAIN BREAKER JG 150A  
 Top FEED  
 65kA AIR  
 INCOMING CONDUCTORS(S) PER NEC, CEC, NOM:  
 Wire Bending Space:  
 Phase Lugs: 1 - 1/0 -300 kcmil  
 Neutral Lugs: 1- (1) #6-250 KCMIL  
 -----BRANCH SUMMATION-----  
 5 - 30A/2P EGB                      5 - 20A/3P EGB

JOB NAME: Kennedy School	EQUIPMENT DESIGNATION: MI
JOB LOCATION:	EQUIPMENT TYPE: NF (Circuit Breaker Type) PANEL 1 OF 1
DRAWN BY: CAD	DRAWING TYPE: ONE LINE DIAGRAM
ENGR:	
DATE: April 10 2026	
DRAWING STATUS: QUOTE	DWG# 0Q-6895526-214691593-01 PG 1 OF 2 REV -

REV	DESCRIPTION	BY	DATE				
-	----	---	---/---/---	-	----	---	---/---/---



PHYSICAL DATA

ENCLOSURE Type 3R/5/12  
 FRONT CAT#: Trim w/Box  
 BOX CAT#: MH50WP

DIMENSIONS:  
 50"(1270mm)Hx20"(508mm)Wx6.5"(165mm)D  
 WIRE BENDING SPACE:  
 TOP - 12.75"(324)mm  
 BOTTOM - 5"(127)mm  
 SIDE - 4.1"(105)mm

PBA: 555  
 Branch Neutral Lug Material: Copper  
 BUSSING: 250A RATED COPPER BUS  
 Silver Plated

OPTIONAL FEATURES:  
 SEISMICALLY QUALIFIED: IBC/ASCE7/CBC/NBCC  
 BRANCH USER PLACEMENT  
 Copper GROUND BAR  
 COPPER MAIN LUGS MECHANICAL  
 COPPER SOLID NEUTRAL  
 Maximum Panel Weight 172.  
 Depth Center of Gravity 6.5  
 Elevation Center of Gravity 25.0  
 Vertical Center of Gravity 10.0

---STANDARD EQUIPMENT NAMEPLATE---  
 Engraved as Follows  
 (Continued on next page.)

ELECTRICAL DATA

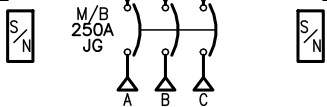
SYSTEM: 208Y/120V 3Ph 4W 60Hz  
 System Ampacity: 150A  
 42kA SYMS. SCCR  
 Fully Rated  
 MAIN: MAIN BREAKER JG 150A  
 Top FEED  
 65kA AIR  
 INCOMING CONDUCTORS(S) PER NEC, CEC, NOM:  
 Wire Bending Space:  
 Phase Lugs:1 - 1/0 -300 kcmil  
 Neutral Lugs: 1- (1) #6-250 KCMIL

-----BRANCH SUMMATION-----  
 4 - 30A/2P EGB                      4 - 20A/3P EGB  
 1 - 25A/2P EGB                      1 - 15A/1P EGB

JOB NAME: Kennedy School	EQUIPMENT DESIGNATION: MH
JOB LOCATION:	EQUIPMENT TYPE: NF (Circuit Breaker Type) PANEL 1 OF 1
DRAWN BY: CAD	DRAWING TYPE: ONE LINE DIAGRAM
ENGR:	<b>SQUARE</b> by Schneider Electric
DATE: April 10 2026	
DRAWING STATUS: QUOTE	DWG# 0Q-6895526-214691594-01      PG 1 OF 2      REV -

REV	DESCRIPTION	BY	DATE				
-	----	--	---/---/---	-	----	--	---/---/---

CKT NO	ACCESSORIES	TYPE	RATING AMP/P		RATING AMP/P	TYPE	ACCESSORIES	CKT NO	
1		EGB	30/2		20/3	EGB		2	
3									4
5		EGB	30/2						6
7									8
9		EGB	30/2			20/3	EGB		10
11									12
13		EGB	30/2						14
15						20/3	EGB		16
17		EGB	30/2						18
19									20
21		EGB	30/2			20/3	EGB		22
23									24
25		EGB	30/2						26
27						20/3	EGB		28
29		EGB	30/2						30
31									32
33		EGB	30/2			20/3	EGB		34
35									36
37		EGB	30/2						38
39						20/3	EGB		40
41		EGB	20/3						42
43									44
45		EGB	20/3			20/3	EGB		46
47									48
49		EGB	20/3					BLANK	50
51								BLANK	52
53	BLANK							BLANK	54



**PHYSICAL DATA**

ENCLOSURE Type 3R/5/12  
 FRONT CAT#: Trim w/Box  
 BOX CAT#: MH62WP

DIMENSIONS:  
 62"(1575mm)Hx20"(508mm)Wx6.5"(165mm)D

WIRE BENDING SPACE:  
 TOP - 5"(127)mm  
 BOTTOM - 12.75"(324)mm  
 SIDE - 4.1"(105)mm

PBA: 555  
 Branch Neutral Lug Material: Aluminum  
 BUSSING: COPPER BUS  
 Silver Plated

OPTIONAL FEATURES:  
 SEISMICALLY QUALIFIED: IBC/ASCE7/CBC/NBCC  
 BRANCH USER PLACEMENT  
 Copper GROUND BAR  
 COPPER SOLID NEUTRAL  
 (Continued on next page.)

**ELECTRICAL DATA**

SYSTEM: 208Y/120V 3Ph 4W 60Hz  
 System Ampacity: 250A  
 42kA SYMS. SCCR  
 Fully Rated

MAIN: MAIN BREAKER JG 250A  
 Bottom FEED  
 65kA AIR  
 INCOMING CONDUCTORS(S) PER NEC, CEC, NOM:  
 Wire Bending Space:  
 Phase Lugs: 1 - 3/0 - 350 kcmil  
 Neutral Lugs: 1- (1) #6-350 KCMIL

-----BRANCH SUMMATION-----  
 10 - 30A/2P EGB                      10 - 20A/3P EGB

JOB NAME:	Kennedy School	EQUIPMENT DESIGNATION:	MK
JOB LOCATION:		EQUIPMENT TYPE:	NF (Circuit Breaker Type) PANEL 1 OF 1
DRAWN BY:	CAD	DRAWING TYPE:	ONE LINE DIAGRAM
ENGR:		<b>SQUARE</b> by Schneider Electric	
DATE:	April 10 2026	DWG#	00-6895526-214691595-01
DRAWING STATUS:	QUOTE	PG 1	OF 2 REV -

REV	DESCRIPTION	BY	DATE	---	----	---	---/---/---
-	----	---	---/---/---	-	----	---	---/---/---

CKT NO	ACCESSORIES	TYPE	RATING AMP/P		RATING AMP/P	TYPE	ACCESSORIES	CKT NO
1		EGB	30/2		30/2	EGB		2
3					20/3	EGB		4
5					30/2			6
7					20/3			8
9					30/2			10
11					25/2			12
13					20/1			14
15					20/1			16
17					20/1			18
19					20/1			20
21					20/1			22
23					20/1			24
25					20/1			26
27					20/1			28
29					20/1			30
31	BLANK				20/1			32
33	BLANK							34
35	BLANK							36
37	BLANK							38
39	BLANK							40
41	BLANK							42

**PHYSICAL DATA**

ENCLOSURE Type 3R/5/12  
 FRONT CAT#: Trim w/Box  
 BOX CAT#: MH50WP

DIMENSIONS:  
 50"(1270mm)Hx20"(508mm)Wx6.5"(165mm)D  
 WIRE BENDING SPACE:  
 TOP - 6.25"(159)mm  
 BOTTOM - 9.5"(242)mm  
 SIDE - 4.1"(105)mm  
 PBA: 555

Branch Neutral Lug Material: Copper  
 BUSSING: 125A RATED COPPER BUS  
 Silver Plated

OPTIONAL FEATURES:  
 SEISMICALLY QUALIFIED: IBC/ASCE7/CBC/NBCC  
 BRANCH USER PLACEMENT  
 Copper GROUND BAR  
 COPPER MAIN LUGS MECHANICAL  
 COPPER SOLID NEUTRAL  
 Maximum Panel Weight 172.  
 Depth Center of Gravity 6.5  
 Elevation Center of Gravity 25.0  
 Vertical Center of Gravity 10.0

---STANDARD EQUIPMENT NAMEPLATE---  
 Engraved as Follows  
 (Continued on next page.)

**ELECTRICAL DATA**

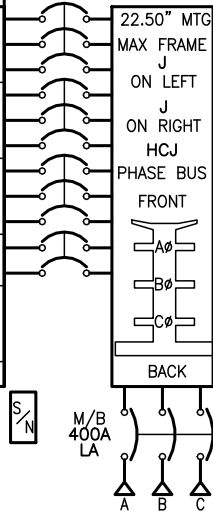
SYSTEM: 208Y/120V 3Ph 4W 60Hz  
 System Ampacity: 100A  
 42kA SYMS. SCCR  
 Fully Rated  
 MAIN: MAIN BREAKER HG 100A  
 Bottom FEED  
 65kA AIR  
 INCOMING CONDUCTORS(S) PER NEC, CEC, NOM:  
 Wire Bending Space:  
 Phase Lugs: 1 - #14 - 2/0 AWG  
 Neutral Lugs: 1 - (1) #6-2/0 AWG

-----BRANCH SUMMATION-----  
 4 - 30A/2P EGB                      4 - 20A/3P EGB  
 1 - 25A/2P EGB                      9 - 20A/1P EGB

JOB NAME:	Kennedy School	EQUIPMENT DESIGNATION:	MP
JOB LOCATION:		EQUIPMENT TYPE:	NF (Circuit Breaker Type) PANEL 1 OF 1
DRAWN BY:	CAD	DRAWING TYPE:	ONE LINE DIAGRAM
ENGR:		 <small>by Schneider Electric</small>	
DATE:	April 10 2026	DWG#	0Q-6895526-214691596-01
DRAWING STATUS:	QUOTE	PG 1	OF 2 REV -

REV	DESCRIPTION	BY	DATE				
-	----	---	---/---/---	-	----	---	---/---/---

CKT NO	ACCESSORIES	TYPE	RATING AMP/P	PHASE BUS CONN
1		QG	150/3	A B C
3		QG	150/3	A B C
5		QG	150/3	A B C
7		BG	50/2	A B
	4.50" BLANK			
	1.50" BLANK			



PHASE BUS CONN	RATING AMP/P	TYPE	ACCESSORIES	CKT NO
			4.50" BLANK	
			4.50" BLANK	
			4.50" BLANK	
			4.50" BLANK	
			4.50" BLANK	

**PHYSICAL DATA**

ENCLOSURE Type 3R/5/12  
 FRONT CAT#: Trim w/Box  
 BOX CAT#: HCJ3273WP

DIMENSIONS:  
 73"(1854mm)Hx32"(813mm)Wx11.75"(298mm)D

WIRE BENDING SPACE:  
 TOP - 14.16"(360mm)  
 BOTTOM - 16.96"(431mm)  
 LEFT SIDE - 6.27"(159mm)  
 RIGHT SIDE - 6.27"(159mm)

PBA: 475  
 Branch Neutral Lug Material: Aluminum  
 BUSSING: 400A RATED COPPER BUS  
 Silver Plated

OPTIONAL FEATURES:  
 SEISMICALLY QUALIFIED: IBC/ASCE7/CBC/NBCC  
 BRANCH USER PLACEMENT  
 Copper GROUND BAR  
 COPPER SOLID NEUTRAL  
 Maximum Panel Weight 517.  
 (Continued on next page.)

**ELECTRICAL DATA**

SYSTEM: 208Y/120V 3Ph 4W 60Hz  
 System Ampacity: 400A  
 42kA SYMS. SCCR  
 Fully Rated

MAIN: MAIN BREAKER LA 400A  
 Bottom FEED  
 42kA AIR  
 INCOMING CONDUCTORS(S) PER NEC, CEC, NOM:  
 Wire Bending Space:  
 Phase Lugs: 1 - #1 - 600, (2) #1 - 250 kcmil

-----BRANCH SUMMATION-----  
 3 - 150A/3P QG                      1 - 50A/2P BG

JOB NAME: Kennedy School	EQUIPMENT DESIGNATION: M2
JOB LOCATION:	EQUIPMENT TYPE: I-Line (Circuit Breaker Type) PANEL 1 OF 1
DRAWN BY: CAD	DRAWING TYPE: ONE LINE DIAGRAM
ENGR:	<b>SQUARE</b> by Schneider Electric
DATE: April 10 2026	
DRAWING STATUS: QUOTE	DWG# 00-6895526-214691597-01      PG 1 OF 2      REV -

# RWC Clifford School – 4/13/26

## **EQUIPMENT SUMMARY & SELLING POLICY**

1. Quote is valid for 30 days.
2. Lead times are estimates only and are subject to change without notice.
3. Standard ground freight charges are prepaid and included in all orders over \$1,250.00
4. Orders under \$1,250.00 are subject to potential freight charges
5. Freight terms: FOB Point of Shipment
6. Quote does NOT include any startup, testing, or short circuit studies unless otherwise noted
7. Quote does NOT include fuses unless otherwise noted
8. All sales per CED Terms & Conditions: <http://sales.our-terms.com/>
  - Take special note of Section 8 while considering the potential impact of government-imposed tariffs
9. Quoted expedites are valid for 3 working days. PO with formal release must be provided prior to expedite expiration otherwise price & lead time are subject to change
10. All prices shown do NOT include tax

**FOB Jobsite is available on all orders for a 2% adder**

**\*\*\*PLEASE REVIEW STANDARD LEAD TIMES, ADVISE IF EXPEDITES ARE REQUIRED\*\*\***

<b><u>Equipment</u></b>	<b><u>Lead Time After Release</u> (Transit Time NOT Included)</b>
Switchboard MSB2	<b>16-18 Weeks</b>
Panelboards	<b>10-12 Weeks</b>

**Net Contractor Pricing: \$68,633.00**

Job is quoted:

- Per Plan Drawings and Spec Sections  
Comments and special conditions as noted.
- Per Plans Only – No Specs
- Per Customer's Take Off – Verbal
- Per Customer's Take Off – Written
- Other:

**Tony Sunzeri**  
**CED Contractors**  
**Switchgear Project Manager**  
**408-418-2794**  
[tsunzeri@yourced.com](mailto:tsunzeri@yourced.com)



Seq #	Qty	Product Description
1	1	<p><b>Designation : MSB2</b> <b>Product Details:</b> 1 - Square D Standard Swbd-QED-2 Switchboard</p> <p>-----</p> <p>Square D Standard Swbd Designed and Tested in accordance with: UL 891/NATIONAL ELECTRIC CODE/NEMA PB-2 System Voltage - 208Y/120V 3Ph 4W 60Hz System Ampacity - 800A Source Description - Single Main Bussing - Silver Plated Copper Neutral Bus - 100% Max Available Fault Current (RMS) - 42kA Enclosure - Type 3R Non-Walk-in Accessibility: Front Only Rodent Barrier Exterior Paint Color - ANSI 49 Strip Heaters - Internal Power Source with Humidistat and Thermostat Ground Lug provided for each device SIS Control Wire Copper Ground Bus Bottom Closure Plates Seismic Qualified</p> <p>Dimensions</p> <p>-----</p> <p>2 - 36" Wide Section(s) 1 - 30" Wide Section(s) 1 - Dimensions: 102.00" W X 35.5" D X 91.5"H 3 - 35.5" Deep Enclosure(s) Approximate Weight: 2514.00 lbs / 1140.35 kgs</p> <p>Incoming Requirements</p> <p>-----</p> <p>Suitable for Use As Service Entrance Entry Point: Left of Lineup, Through the Bottom Connection Type: Cable Reverse Feed Hot Sequence Utility: Pacific Gas &amp; Electric (CA) Standard Door Pattern 15in Blank Top, 15in MS Btm</p> <p>Mains</p> <p>-----</p> <p>1 - 800AS/800AT 208V 80% Rated 65 kA 3 Pole UL, Fixed Mounted Electronic Trip Circuit Breaker: Type MG</p> <p>Feeders</p> <p>-----</p> <p>3 - 225AT 208V 80% Rated 65 kA 3 Pole UL, Group Mounted Thermal Magnetic Circuit Breaker: Type QG 2 - 400AT 208V 80% Rated 42 kA 3 Pole UL, Group Mounted Thermal Magnetic Circuit Breaker: Type LA 1 - 100AT 208V 80% Rated 100 kA 3 Pole UL, Group Mounted Thermal Magnetic Circuit Breaker: Type BJ</p>

Seq #	Qty	Product Description
2	1	<p><b>Designation : MA</b> <b>Product Details:</b> 1 - NF MB Panel (INTERIOR)-NF Panelboard Consisting of</p>

208Y/120V 3Ph 4W 60Hz SCCR: 42kA  
Fully Rated  
Single Main: 225A/3P JG Circuit Breaker  
Branch Neutral Lug Material: Aluminum  
Incoming Conductors: 1 - 3/0 - 350 kcmil  
Bus: 250A Rated Copper: Silver Plated  
CU Ground Bar  
54 Circuit Interior  
Type 3R/5/12Box: 62H x 20W x 6.5D  
Incoming: Bottom Trim w/ Box  
Box Cat No: MH62WP  
Ref. Drawing: PBA555  
Feeders:  
9 - 30A/2P EGB  
9 - 20A/3P EGB  
Optional Features:  
Standard Panel (Box Ahead),Copper Solid  
Neutral,Seismic Qualification -  
IBC/ASCE7/CBC/NBCC,Copper Ground Bar  
Branch User Placement  
Standard Nameplate:  
Engraved as Follows  
Line 1: MA  
Size: 3.50" Wide x 1.00" High (Std)  
Color: White Surface / Black Letters  
Plastic/Adhesive - Screw-on  
1 - MH62WP-PNLBD ENCLOSURE/BOX T-3R/12 62H 20W

Seq #	Qty	Product Description
3	1	<p><b>Designation : MB</b> <b>Product Details:</b> 1 - NF MB Panel (INTERIOR)-NF Panelboard Consisting of 208Y/120V 3Ph 4W 60Hz SCCR: 42kA Fully Rated Single Main: 225A/3P JG Circuit Breaker Branch Neutral Lug Material: Aluminum Incoming Conductors: 1 - 3/0 - 350 kcmil Bus: 250A Rated Copper: Silver Plated CU Ground Bar 54 Circuit Interior Type 3R/5/12Box: 62H x 20W x 6.5D Incoming: Top Trim w/ Box Box Cat No: MH62WP Ref. Drawing: PBA555 Feeders: 8 - 30A/2P EGB 8 - 20A/3P EGB 2 - 15A/2P EGB 1 - 15A/1P EGB Optional Features: Standard Panel (Box Ahead),Copper Solid Neutral,Seismic Qualification - IBC/ASCE7/CBC/NBCC,Copper Ground Bar Branch User Placement Standard Nameplate: Engraved as Follows Line 1: MB Size: 3.50" Wide x 1.00" High (Std) Color: White Surface / Black Letters Plastic/Adhesive - Screw-on 1 - MH62WP-PNLBD ENCLOSURE/BOX T-3R/12 62H 20W</p>

Seq #	Qty	Product Description
4	1	<p><b>Designation : MC</b> <b>Product Details:</b> 1 - NQ MB Panel (INTERIOR)-NQ Panelboard Consisting of 208Y/120V 3Ph 4W 60Hz SCCR: 42kA</p>

Fully Rated  
 Single Main: 150A/3P QG Circuit Breaker  
 Branch Neutral Lug Material: Aluminum  
 Incoming Conductors: 1 - #4 - 300 kcmil  
 Bus: 225A Rated Copper: Silver Plated  
 CU Ground Bar  
 30 Circuit Interior  
 Type 3R/5/12Box: 44H x 20W x 6.5D  
 Incoming: Bottom Trim w/ Box  
 Box Cat No: MH44WP  
 Ref. Drawing: PBA711  
 Feeders:  
 4 - 30A/2P QHB  
 4 - 20A/3P QHB  
 1 - 20A/2P QHB  
 1 - 25A/2P QHB  
 1 - 15A/1P QHB  
 Optional Features:  
 Standard Panel (Box Ahead),Copper Solid  
 Neutral,Seismic Qualification -  
 IBC/ASCE7/CBC/NBCC,Copper Ground Bar  
 Branch User Placement  
 Standard Nameplate:  
 Engraved as Follows  
 Line 1: MC  
 Size: 3.50" Wide x 1.00" High (Std)  
 Color: White Surface / Black Letters  
 Plastic/Adhesive - Screw-on  
 1 - MH44WP-PANELBOARD ENCL/BOX TYPE 3R/12 44H 20W

Seq #	Qty	Product Description
-------	-----	---------------------

5	1	<p><b>Designation :</b> MD1  <b>Product Details:</b>            1 - NQ ML Panel (INTERIOR)-NQ Panelboard            Consisting of            208Y/120V 3Ph 4W 60Hz SCCR: 42kA            Fully Rated            Main Lug Only: 225A            Branch Neutral Lug Material: Aluminum            Incoming Conductors: 1 - #6 - 350 kcmil            Bus: 225A Rated Copper: Silver Plated            CU Ground Bar            30 Circuit Interior            Type 1,Box: 50H x 20W x 5.75D            Incoming: Top Trim: Surface with Door            Box Cat No: MH50 Front Cat No: NC50S            Ref. Drawing: PBA701A            Feeders:            3 - 30A/2P QHB            3 - 20A/3P QHB            1 - Sub-Feed One: 100A/3P QG            Optional Features:            Standard Panel (Box Ahead),Copper Solid            Neutral,Seismic Qualification -            IBC/ASCE7/CBC/NBCC,Copper Ground Bar            Branch User Placement            Standard Nameplate:            Engraved as Follows            Line 1: MD1            Size: 3.50" Wide x 1.00" High (Std)            Color: White Surface / Black Letters            Plastic/Adhesive - Screw-on            1 - MH50-PANELBOARD ENCLOSURE/BOX TYPE 1 50H 20W</p> <p>1 - NC50S-PANELBOARD COVER/TRIM NF TYPE 1 S 50H</p>
---	---	--

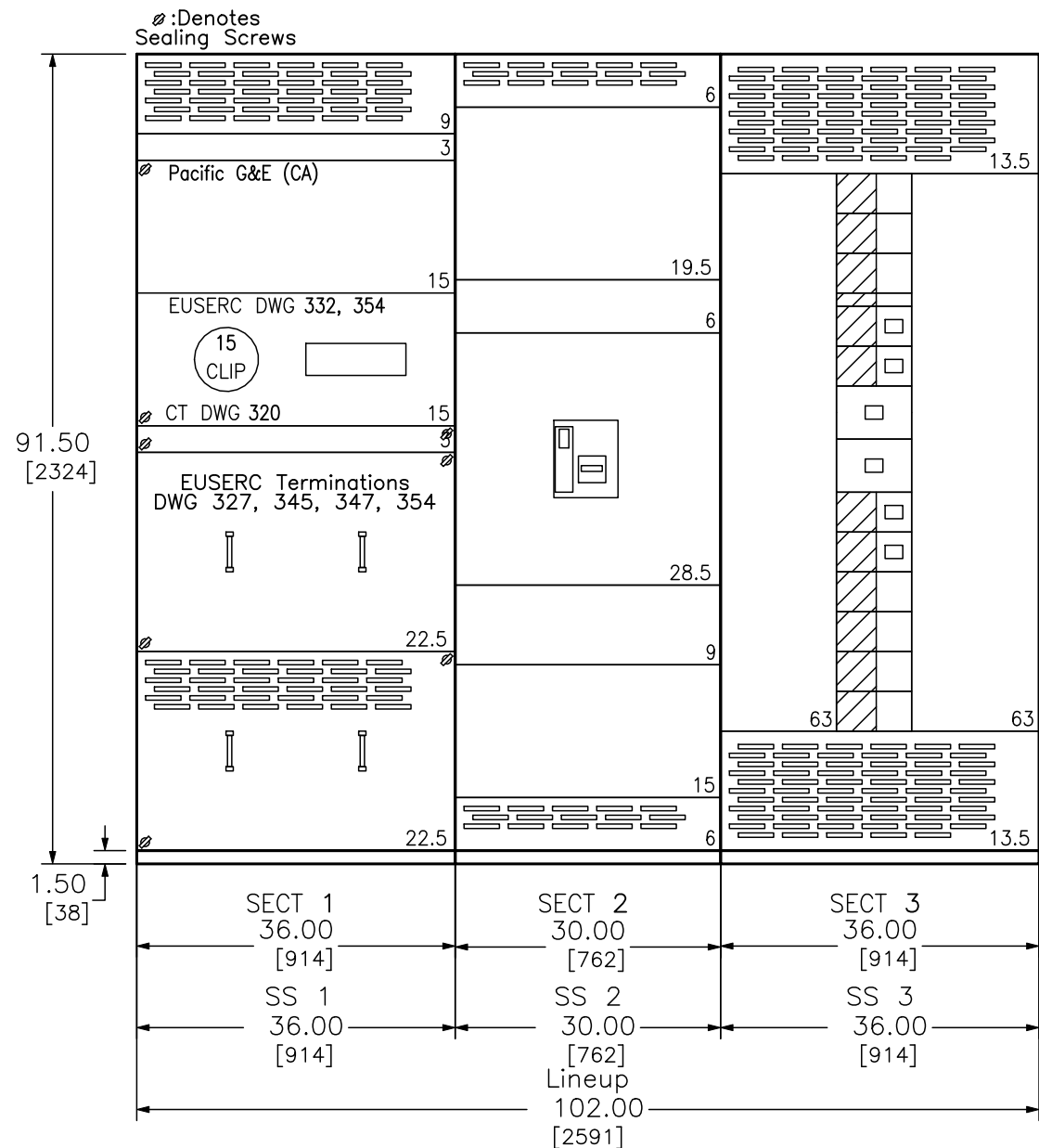
Seq #	Qty	Product Description
-------	-----	---------------------

6	1	<p><b>Designation :</b> MD2  <b>Product Details:</b></p>
---	---	--

1 - NQ MB Panel (INTERIOR)-NQ Panelboard  
Consisting of  
208Y/120V 3Ph 4W 60Hz SCCR: 22kA  
Fully Rated  
Single Main: 100A/3P QD Circuit Breaker  
Branch Neutral Lug Material: Aluminum  
Incoming Conductors: 1 - #4 - 300 kcmil  
Bus: 225A Rated Copper: Silver Plated  
CU Ground Bar  
30 Circuit Interior  
Type 1,Box: 44H x 20W x 5.75D  
Incoming: Top Trim: Surface with Door  
Box Cat No: MH44BE Front Cat No: NC44S  
Ref. Drawing: PBA707A  
Feeders:  
3 - 30A/2P QOB-VH  
3 - 20A/3P QOB-VH  
Optional Features:  
Standard Panel (Box Ahead),Blank  
Endwalls,Copper Solid Neutral,Seismic  
Qualification -  
IBC/ASCE7/CBC/NBCC,Copper Ground Bar  
Branch User Placement  
Standard Nameplate:  
Engraved as Follows  
Line 1: MD2  
Size: 3.50" Wide x 1.00" High (Std)  
Color: White Surface / Black Letters  
Plastic/Adhesive - Screw-on  
1 - MH44BE-PANELBOARD ENCLOSURE/BOX TYPE 1 44H 20W  
  
1 - NC44S-PANELBOARD COVER/TRIM NF TYPE 1 S 44H

REV	DESCRIPTION	BY	DATE	-	----	--	---/---/---	-	----	--	---/---/---
-	----	---	---/---/---	-	----	--	---/---/---	-	----	--	---/---/---

T-bus 19.5 in      T-bus 19.5 in      T-bus 19.5 in



**SWITCHBOARD GENERAL NOTES**  
**PRODUCT DESCRIPTION & RATINGS**

**Power System Data**

208Y/120V 3Ph 4W 60Hz / 3 Phase Wye  
 Solidly Grounded  
 System Short Circuit Current Rating: 42kA RMS  
 Incoming Section 1 Cable Through the Bottom Left of Lineup

**Bus System Data**

800A Silver Plated Copper Main Bus  
 (2) .25x1.50 IN/6x38 mm Cu Bus Bar Per Phase/Neutral  
 (1) .25x.875 IN/6x22 mm Cu Ground Bus

**Enclosure Data**

Type 3R Free Standing  
 Exterior Paint Color: ANSI 49  
 Front Accessibility Only Required  
 Handling: Rollers  
 Strip Heater w. Thermostat & Humidistat  
 Rodent barriers  
 1.5H Corrosion Resist Base Channels  
 Steel Bottom Closure Plate  
 Base channels cannot be removed from EUSERC switchboard line-ups  
 Utility sealing hardware installed for unmetered bus compartments

**Estimated Shipping Weight**

Shipping Split 1 905.00 lbs / 410.51 kgs  
 Shipping Split 2 694.00 lbs / 314.80 kgs  
 Shipping Split 3 915.00 lbs / 415.04 kgs  
 Complete Lineup 2514.00 lbs / 1140.35 kgs  
 NOTE: Refer to the shipping documents for actual weights of the equipment.

**Code Standards**

U.L. Deadfront and suitable for use as Service Entrance when not more than six (6) disconnecting means are provided.

**Rating Nameplates**

ST1- Deadfront - Section Bus 800A  
 ST2- Service Entrance - Section Bus 800A  
 ST3- Deadfront - Section Bus 800A

**PRODUCT INFORMATION**

**Wiring**

All wiring to be SIS Wire type

**Instruction Bulletins**

Reference 80043-055 For Handling, Installation, Anchoring, Inspection And Maintenance Information

**Product Accessories/Options**

Seismic Qualified

JOB NAME: Clifford School	EQUIPMENT DESIGNATION: MSB2
JOB LOCATION:	EQUIPMENT TYPE: QED-2 Switchboard
DRAWN BY: CAD	DRAWING TYPE: GENERAL NOTES
ENGR:	<b>SQUARE D</b> by Schneider Electric
DATE: April 12 2026	
DRAWING STATUS: QUOTE	DWG# FQ-6895810-214707049-01



REV	DESCRIPTION	BY	DATE				
-	----	--	---/---/---	-	----	--	---/---/---

CKT NO	ACCESSORIES	TYPE	RATING AMP/P	S/N	M/B 225A JG	A	B	C	S/N	RATING AMP/P	TYPE	ACCESSORIES	CKT NO
1		EGB	30/2							30/2	EGB		2
3													4
5		EGB	30/2							30/2	EGB		6
7													8
9		EGB	30/2							30/2	EGB		10
11													12
13		EGB	30/2							30/2	EGB		14
15										20/3	EGB		16
17		EGB	30/2							30/2	EGB		18
19													20
21										20/3	EGB		22
23		EGB	20/3							20/3	EGB		24
25													26
27										20/3	EGB		28
29		EGB	20/3							20/3	EGB		30
31													32
33										20/3	EGB		34
35		EGB	20/3							20/3	EGB		36
37													38
39										15/2	EGB		40
41		EGB	20/3							15/2	EGB		42
43													44
45	BLANK									15/1	EGB		46
47	BLANK											BLANK	48
49	BLANK											BLANK	50
51	BLANK											BLANK	52
53	BLANK											BLANK	54

PHYSICAL DATA

ENCLOSURE Type 3R/5/12  
 FRONT CAT#: Trim w/Box  
 BOX CAT#: MH62WP

DIMENSIONS:  
 62"(1575mm)Hx20"(508mm)Wx6.5"(165mm)D

WIRE BENDING SPACE:  
 TOP - 12.75"(324)mm  
 BOTTOM - 5"(127)mm  
 SIDE - 4.1"(105)mm

PBA: 555  
 Branch Neutral Lug Material: Aluminum  
 BUSSING: 250A RATED COPPER BUS  
 Silver Plated


OPTIONAL FEATURES:  
 SEISMICALLY QUALIFIED: IBC/ASCE7/CBC/NBCC  
 BRANCH USER PLACEMENT  
 Copper GROUND BAR  
 COPPER SOLID NEUTRAL  
 (Continued on next page.)

ELECTRICAL DATA

SYSTEM: 208Y/120V 3Ph 4W 60Hz  
 System Ampacity: 225A  
 42kA SYMS. SCCR  
 Fully Rated

MAIN: MAIN BREAKER JG 225A  
 Top FEED  
 65kA AIR  
 INCOMING CONDUCTORS(S) PER NEC, CEC, NOM:  
 Wire Bending Space:  
 Phase Lugs: 1 - 3/0 - 350 kcmil  
 Neutral Lugs: 1 - (1) #6-350 KCMIL

-----BRANCH SUMMATION-----  
 8 - 30A/2P EGB                      8 - 20A/3P EGB  
 2 - 15A/2P EGB                      1 - 15A/1P EGB

JOB NAME:	Clifford School	EQUIPMENT DESIGNATION:	MB
JOB LOCATION:		EQUIPMENT TYPE:	NF (Circuit Breaker Type) PANEL 1 OF 1
DRAWN BY:	CAD	DRAWING TYPE:	ONE LINE DIAGRAM
ENGR:		<b>SQUARE</b> 	
DATE:	April 12 2026	<small>by Schneider Electric</small>	
DRAWING STATUS:	QUOTE	DWG#	00-6895810-214707051-01
		PG 1	OF 2
		REV	-

REV	DESCRIPTION	BY	DATE				
-	----	--	---/---/---	-	----	--	---/---/---

CKT NO	ACCESSORIES	TYPE	RATING AMP/P			RATING AMP/P	TYPE	ACCESSORIES	CKT NO	
1		QHB	30/2			20/2	QHB		2	
3										4
5		QHB	30/2				25/2	QHB		6
7										8
9		QHB	30/2				20/3	QHB		10
11										12
13		QHB	30/2							14
15										16
17		QHB	20/3				20/3	QHB		18
19										20
21		QHB	20/3				15/1	QHB		22
23									BLANK	24
25		QHB	20/3						BLANK	26
27									BLANK	28
29	BLANK								BLANK	30

PHYSICAL DATA

ENCLOSURE Type 3R/5/12  
 FRONT CAT#: Trim w/Box  
 BOX CAT#: MH44WP

DIMENSIONS:  
 44"(1118mm)Hx20"(508mm)Wx6.5"(165mm)D

WIRE BENDING SPACE:  
 TOP - 5"(127)mm  
 BOTTOM - 10.47"(266)mm  
 SIDE - 6.13"(156)mm

PBA: 711  
 Branch Neutral Lug Material: Aluminum  
 BUSSING: 225A RATED COPPER BUS  
 Silver Plated

OPTIONAL FEATURES:  
 SEISMICALLY QUALIFIED: IBC/ASCE7/CBC/NBCC  
 BRANCH USER PLACEMENT  
 Copper GROUND BAR  
 COPPER SOLID NEUTRAL  
 Maximum Panel Weight 121.  
 Depth Center of Gravity 6.5  
 Elevation Center of Gravity 22.0  
 Vertical Center of Gravity 10.0

---STANDARD EQUIPMENT NAMEPLATE---

Engraved as Follows  
 LINE 1: MC  
 (Continued on next page.)

ELECTRICAL DATA

SYSTEM: 208Y/120V 3Ph 4W 60Hz  
 System Ampacity: 150A  
 42kA SYMS. SCCR  
 Fully Rated

MAIN: MAIN BREAKER QG 150A  
 Bottom FEED  
 65kA AIR  
 INCOMING CONDUCTORS(S) PER NEC, CEC, NOM:  
 Wire Bending Space:  
 Phase Lugs:1 - #4 - 300 kcmil  
 Neutral Lugs: One (1) #6-350 kcmil

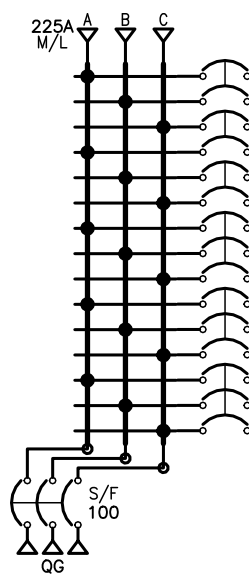
-----BRANCH SUMMATION-----

4 - 30A/2P QHB	4 - 20A/3P QHB
1 - 20A/2P QHB	1 - 25A/2P QHB
1 - 15A/1P QHB	

JOB NAME:	Clifford School	EQUIPMENT DESIGNATION:	MC
JOB LOCATION:		EQUIPMENT TYPE:	NQ (Circuit Breaker Type) PANEL 1 OF 1
DRAWN BY:	CAD	DRAWING TYPE:	ONE LINE DIAGRAM
ENGR:			
DATE:	April 12 2026	DWG#	0Q-6895810-214707052-01
DRAWING STATUS:	QUOTE	PG 1	OF 2 REV -

REV	DESCRIPTION	BY	DATE				
-	----	--	---/---/---	-	----	--	---/---/---

CKT NO	ACCESSORIES	TYPE	RATING AMP/P	S/N
1	BLANK			
3	BLANK			
5	BLANK			
7	BLANK			
9	BLANK			
11	BLANK			
13	BLANK			
15	BLANK			
17	BLANK			
19	BLANK			
21	BLANK			
23	BLANK			
25	BLANK			
27	BLANK			
29	BLANK			



S/N	RATING AMP/P	TYPE	ACCESSORIES	CKT NO
	30/2	QHB		2
	30/2	QHB		4
	30/2	QHB		6
	30/2	QHB		8
	30/2	QHB		10
	30/2	QHB		12
	30/2	QHB		14
	20/3	QHB		16
	20/3	QHB		18
	20/3	QHB		20
	20/3	QHB		22
	20/3	QHB		24
	20/3	QHB		26
	20/3	QHB		28
				30

PHYSICAL DATA

ENCLOSURE Type 1  
 Surface with Door  
 FRONT CAT#: NC50S  
 BOX CAT#: MH50

DIMENSIONS:  
 50''(1270mm)Hx20''(508mm)Wx5.75''(146mm)D

WIRE BENDING SPACE:  
 TOP - 14''(356)mm  
 BOTTOM - 5''(127)mm  
 SIDE - 6.13''(156)mm

PBA: 701A  
 Branch Neutral Lug Material: Aluminum  
 BUSSING: 225A RATED COPPER BUS  
 Silver Plated

OPTIONAL FEATURES:  
 SEISMICALLY QUALIFIED: IBC/ASCE7/CBC/NBCC  
 BRANCH USER PLACEMENT  
 Copper GROUND BAR  
 COPPER SOLID NEUTRAL  
 Maximum Panel Weight 125.  
 Depth Center of Gravity 5.75  
 Elevation Center of Gravity 25.0  
 Vertical Center of Gravity 10.0

---STANDARD EQUIPMENT NAMEPLATE---

Engraved as Follows  
 (Continued on next page.)

ELECTRICAL DATA

SYSTEM: 208Y/120V 3Ph 4W 60Hz  
 System Ampacity: 225A  
 42kA SYMS. SCCR  
 Fully Rated

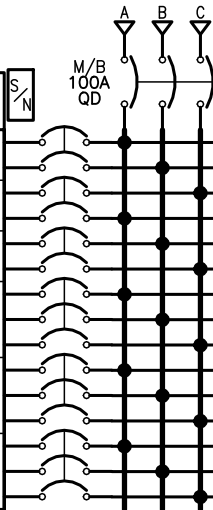
MAIN: MAIN LUGS : 225A  
 Top FEED  
 INCOMING CONDUCTORS(S) PER NEC, CEC, NOM:  
 Wire Bending Space:  
 Phase Lugs:1 - #6 - 350 kcmil  
 Neutral Lugs: One (1) #6-350 kcmil

-----BRANCH SUMMATION-----  
 3 - 30A/2P QHB                      3 - 20A/3P QHB  
 1 - 100A/3P QG

JOB NAME: Clifford School	EQUIPMENT DESIGNATION: MD1
JOB LOCATION:	EQUIPMENT TYPE: NQ (Circuit Breaker Type) PANEL 1 OF 1
DRAWN BY: CAD	DRAWING TYPE: ONE LINE DIAGRAM
ENGR:	<b>SQUARE</b> by Schneider Electric
DATE: April 12 2026	
DRAWING STATUS: QUOTE	DWG# 0Q-6895810-214707053-01      PG 1 OF 2      REV -

REV	DESCRIPTION	BY	DATE				
-	----	---	---/---/---	-	----	---	---/---/---

CKT NO	ACCESSORIES	TYPE	RATING AMP/P	S/N
1		QOB-VH	30/2	
3				
5		QOB-VH	30/2	
7				
9		QOB-VH	30/2	
11				
13				
15		QOB-VH	20/3	
17				
19				
21		QOB-VH	20/3	
23				
25				
27		QOB-VH	20/3	
29				



S/N	RATING AMP/P	TYPE	ACCESSORIES	CKT NO
			BLANK	2
			BLANK	4
			BLANK	6
			BLANK	8
			BLANK	10
			BLANK	12
			BLANK	14
			BLANK	16
			BLANK	18
			BLANK	20
			BLANK	22
			BLANK	24
			BLANK	26
			BLANK	28
			BLANK	30

PHYSICAL DATA

ENCLOSURE Type 1

Surface with Door  
 FRONT CAT#: NC44S  
 BOX CAT#: MH44BE

DIMENSIONS:

44"(1118mm)Hx20"(508mm)Wx5.75"(146mm)D

WIRE BENDING SPACE:

TOP - 10.47"(266)mm  
 BOTTOM - 5"(127)mm  
 SIDE - 6.13"(156)mm

PBA: 707A

Branch Neutral Lug Material: Aluminum

BUSSING: 225A RATED COPPER BUS  
 Silver Plated

OPTIONAL FEATURES:

- SEISMICALLY QUALIFIED: IBC/ASCE7/CBC/NBCC
- BRANCH USER PLACEMENT
- Copper GROUND BAR
- BLANK ENDWALLS
- COPPER SOLID NEUTRAL
- Maximum Panel Weight 110.
- Depth Center of Gravity 5.75
- Elevation Center of Gravity 22.0
- Vertical Center of Gravity 10.0

---STANDARD EQUIPMENT NAMEPLATE---

(Continued on next page.)

ELECTRICAL DATA

SYSTEM: 208Y/120V 3Ph 4W 60Hz

System Ampacity: 100A

22kA SYMS. SCCR

Fully Rated

MAIN: MAIN BREAKER QD 100A

Top FEED

25kA AIR

INCOMING CONDUCTORS(S) PER NEC, CEC, NOM:

Wire Bending Space:


Phase Lugs: 1 - #4 - 300 kcmil

Neutral Lugs: One (1) #6-2/0 AWG

-----BRANCH SUMMATION-----

3 - 30A/2P QOB-VH

3 - 20A/3P QOB-VH

JOB NAME:	Clifford School	EQUIPMENT DESIGNATION:	MD2
JOB LOCATION:		EQUIPMENT TYPE:	NQ (Circuit Breaker Type) PANEL 1 OF 1
DRAWN BY:	CAD	DRAWING TYPE:	ONE LINE DIAGRAM
ENGR:		<b>SQUARE</b> 	
DATE:	April 12 2026	<small>by Schneider Electric</small>	
DRAWING STATUS:	QUOTE	DWG#	0Q-6895810-214707054-01
		PG 1	OF 2
		REV	-

# RWC Orion School – 4/13/26

## **EQUIPMENT SUMMARY & SELLING POLICY**

1. Quote is valid for 30 days.
2. Lead times are estimates only and are subject to change without notice.
3. Standard ground freight charges are prepaid and included in all orders over \$1,250.00
4. Orders under \$1,250.00 are subject to potential freight charges
5. Freight terms: FOB Point of Shipment
6. Quote does NOT include any startup, testing, or short circuit studies unless otherwise noted
7. Quote does NOT include fuses unless otherwise noted
8. All sales per CED Terms & Conditions: <http://sales.our-terms.com/>
  - Take special note of Section 8 while considering the potential impact of government-imposed tariffs
9. Quoted expedites are valid for 3 working days. PO with formal release must be provided prior to expedite expiration otherwise price & lead time are subject to change
10. All prices shown do NOT include tax

**FOB Jobsite is available on all orders for a 2% adder**

**\*\*\*PLEASE REVIEW STANDARD LEAD TIMES, ADVISE IF EXPEDITES ARE REQUIRED\*\*\***

<u>Equipment</u>	<u>Lead Time After Release</u> (Transit Time NOT Included)
Panelboards	<b>10-12 Weeks</b>

**Net Contractor Pricing: \$6,423.00**

Job is quoted:

- Per Plan Drawings and Spec Sections  
Comments and special conditions as noted.
- Per Plans Only – No Specs
- Per Customer's Take Off – Verbal
- Per Customer's Take Off – Written
- Other:

**Tony Sunzeri**  
**CED Contractors**  
**Switchgear Project Manager**  
**408-418-2794**  
[tsunzeri@yourced.com](mailto:tsunzeri@yourced.com)



Seq #	Qty	Product Description
1	1	<p><b>Designation : MC</b>  <b>Product Details:</b>            1 - NQ MB Panel (INTERIOR)-NQ Panelboard            Consisting of            208Y/120V 3Ph 4W 60Hz SCCR: 22kA            Fully Rated            Single Main: 100A/3P QD Circuit Breaker            Branch Neutral Lug Material: Aluminum            Incoming Conductors: 1 - #4 - 300 kcmil            Bus: 225A Rated Copper: Silver Plated            CU Ground Bar            30 Circuit Interior            Type 1,Box: 44H x 20W x 5.75D            Incoming: Top Trim: Surface with Door            Box Cat No: MH44BE Front Cat No: NC44S            Ref. Drawing: PBA707A            Feeders:            4 - 40A/2P QOB-VH            Optional Features:            Standard Panel (Box Ahead),Blank            Endwalls,Copper Solid Neutral,Seismic            Qualification -            IBC/ASCE7/CBC/NBCC,Copper Ground Bar            Branch User Placement            Standard Nameplate:            Engraved as Follows            Line 1: MC            Size: 3.50" Wide x 1.00" High (Std)            Color: White Surface / Black Letters            Plastic/Adhesive - Screw-on            1 - MH44BE-PANELBOARD ENCLOSURE/BOX TYPE 1 44H 20W             1 - NC44S-PANELBOARD COVER/TRIM NF TYPE 1 S 44H</p>

Seq #	Qty	Product Description
2	1	<p><b>Designation : MD</b>  <b>Product Details:</b>            1 - NQ MB Panel (INTERIOR)-NQ Panelboard            Consisting of            208Y/120V 3Ph 4W 60Hz SCCR: 10kA            Fully Rated            Single Main: 100A/3P QB Circuit Breaker            Branch Neutral Lug Material: Aluminum            Incoming Conductors: 1 - #4 - 300 kcmil            Bus: 225A Rated Copper: Silver Plated            CU Ground Bar            30 Circuit Interior            Type 3R/5/12Box: 44H x 20W x 6.5D            Incoming: Bottom Trim w/ Box            Box Cat No: MH44WP            Ref. Drawing: PBA711            Feeders:            3 - 30A/2P QOB            1 - 60A/3P QOB            Optional Features:            Standard Panel (Box Ahead),Copper Solid            Neutral,Seismic Qualification -            IBC/ASCE7/CBC/NBCC,Copper Ground Bar            Branch User Placement            Standard Nameplate:            Engraved as Follows            Line 1: MD            Size: 3.50" Wide x 1.00" High (Std)            Color: White Surface / Black Letters            Plastic/Adhesive - Screw-on            1 - MH44WP-PANELBOARD ENCL/BOX TYPE 3R/12 44H 20W</p>

Seq #	Qty	Product Description
3	1	<p><b>Designation : ME</b></p> <p><b>Product Details:</b></p> <p>1 - NQ MB Panel (INTERIOR)-NQ Panelboard            Consisting of            208Y/120V 3Ph 4W 60Hz SCCR: 10kA            Fully Rated            Single Main: 60A/3P HD Circuit Breaker            Branch Neutral Lug Material: Aluminum            Incoming Conductors: 1 - #14 - 3/0 AWG            Bus: 100A Rated Copper: Silver Plated            CU Ground Bar            18 Circuit Interior            Type 3R/5/12Box: 38H x 20W x 6.5D            Incoming: Bottom Trim w/ Box            Box Cat No: MH38WP            Ref. Drawing: PBA711            Feeders:            3 - 30A/2P QOB            Optional Features:            Standard Panel (Box Ahead),Copper Solid            Neutral,Seismic Qualification -            IBC/ASCE7/CBC/NBCC,Copper Ground Bar            Branch User Placement            Standard Nameplate:            Engraved as Follows            Line 1: ME            Size: 3.50" Wide x 1.00" High (Std)            Color: White Surface / Black Letters            Plastic/Adhesive - Screw-on            1 - MH38WP-PANELBOARD ENCL/BOX TYPE 3R/12 38H 20W</p>

REV	DESCRIPTION	BY	DATE				
-	----	---	---/---/---	-	----	---	---/---/---

CKT NO	ACCESSORIES	TYPE	RATING AMP/P	S/N		S/N	RATING AMP/P	TYPE	ACCESSORIES	CKT NO	
1									BLANK	2	
3		QOB-VH	40/2							BLANK	4
5										BLANK	6
7		QOB-VH	40/2							BLANK	8
9										BLANK	10
11		QOB-VH	40/2							BLANK	12
13										BLANK	14
15		QOB-VH	40/2							BLANK	16
17	BLANK									BLANK	18
19	BLANK									BLANK	20
21	BLANK									BLANK	22
23	BLANK									BLANK	24
25	BLANK									BLANK	26
27	BLANK									BLANK	28
29	BLANK									BLANK	30

PHYSICAL DATA

ENCLOSURE Type 1

Surface with Door  
 FRONT CAT#: NC44S  
 BOX CAT#: MH44BE

DIMENSIONS:

44"(1118mm)Hx20"(508mm)Wx5.75"(146mm)D

WIRE BENDING SPACE:

TOP - 10.47"(266)mm  
 BOTTOM - 5"(127)mm  
 SIDE - 6.13"(156)mm

PBA: 707A

Branch Neutral Lug Material: Aluminum

BUSSING: 225A RATED COPPER BUS  
 Silver Plated

OPTIONAL FEATURES:

- SEISMICALLY QUALIFIED: IBC/ASCE7/CBC/NBCC
- BRANCH USER PLACEMENT
- Copper GROUND BAR
- BLANK ENDWALLS
- COPPER SOLID NEUTRAL
- Maximum Panel Weight 110.
- Depth Center of Gravity 5.75
- Elevation Center of Gravity 22.0
- Vertical Center of Gravity 10.0

---STANDARD EQUIPMENT NAMEPLATE---

(Continued on next page.)

ELECTRICAL DATA

SYSTEM: 208Y/120V 3Ph 4W 60Hz

System Ampacity: 100A

22kA SYMS. SCCR

Fully Rated

MAIN: MAIN BREAKER QD 100A

Top FEED

25kA AIR

INCOMING CONDUCTORS(S) PER NEC, CEC, NOM:

Wire Bending Space:

Phase Lugs: 1 - #4 - 300 kcmil

Neutral Lugs: One (1) #6-2/0 AWG

-----BRANCH SUMMATION-----

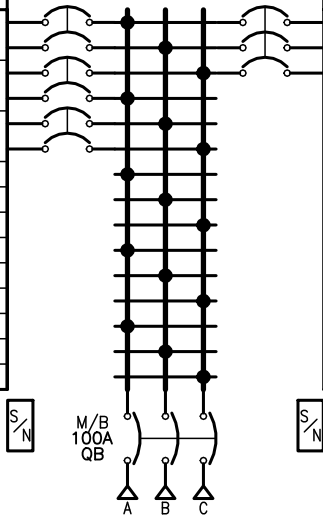
4 - 40A/2P QOB-VH

JOB NAME:	Orion School	EQUIPMENT DESIGNATION:	MC
JOB LOCATION:		EQUIPMENT TYPE:	NQ (Circuit Breaker Type) PANEL 1 OF 1
DRAWN BY:	CAD	DRAWING TYPE:	ONE LINE DIAGRAM
ENGR:		 <small>by Schneider Electric</small>	
DATE:	April 12 2026	DWG#	0Q-6895813-214707117-01
DRAWING STATUS:	QUOTE	PG 1	OF 2 REV -

REV	DESCRIPTION	BY	DATE				
-	----	--	---/---/---	-	-----	--	---/---/---

CKT NO	ACCESSORIES	TYPE	RATING AMP/P
1		QOB	30/2
3			
5		QOB	30/2
7			
9		QOB	30/2
11			
13	BLANK		
15	BLANK		
17	BLANK		
19	BLANK		
21	BLANK		
23	BLANK		
25	BLANK		
27	BLANK		
29	BLANK		

RATING AMP/P	TYPE	ACCESSORIES	CKT NO
60/3	QOB		2
			4
			6
		BLANK	8
		BLANK	10
		BLANK	12
		BLANK	14
		BLANK	16
		BLANK	18
		BLANK	20
		BLANK	22
		BLANK	24
		BLANK	26
		BLANK	28
		BLANK	30



PHYSICAL DATA

ENCLOSURE Type 3R/5/12  
 FRONT CAT#: Trim w/Box  
 BOX CAT#: MH44WP

DIMENSIONS:  
 44"(1118mm)Hx20"(508mm)Wx6.5"(165mm)D  
 WIRE BENDING SPACE:  
 TOP - 5"(127)mm  
 BOTTOM - 10.47"(266)mm  
 SIDE - 6.13"(156)mm

PBA: 711  
 Branch Neutral Lug Material: Aluminum  
 BUSSING: 225A RATED COPPER BUS  
 Silver Plated


OPTIONAL FEATURES:  
 SEISMICALLY QUALIFIED: IBC/ASCE7/CBC/NBCC  
 BRANCH USER PLACEMENT  
 Copper GROUND BAR  
 COPPER SOLID NEUTRAL  
 Maximum Panel Weight 121.  
 Depth Center of Gravity 6.5  
 Elevation Center of Gravity 22.0  
 Vertical Center of Gravity 10.0

---STANDARD EQUIPMENT NAMEPLATE---  
 Engraved as Follows  
 LINE 1: MD  
 (Continued on next page.)

ELECTRICAL DATA

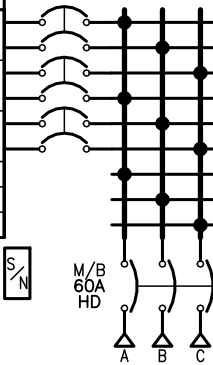
SYSTEM: 208Y/120V 3Ph 4W 60Hz  
 System Ampacity: 100A  
 10kA SYMS. SCCR  
 Fully Rated  
 MAIN: MAIN BREAKER QB 100A  
 Bottom FEED  
 10kA AIR  
 INCOMING CONDUCTORS(S) PER NEC, CEC, NOM:  
 Wire Bending Space:  
 Phase Lugs:1 - #4 - 300 kcmil  
 Neutral Lugs: One (1) #6-2/0 AWG

-----BRANCH SUMMATION-----  
 3 - 30A/2P QOB                      1 - 60A/3P QOB

JOB NAME:	Orion School	EQUIPMENT DESIGNATION:	MD
JOB LOCATION:		EQUIPMENT TYPE:	NQ (Circuit Breaker Type) PANEL 1 OF 1
DRAWN BY:	CAD	DRAWING TYPE:	ONE LINE DIAGRAM
ENGR:		<b>SQUARE</b> 	
DATE:	April 12 2026	<small>by Schneider Electric</small>	
DRAWING STATUS:	QUOTE	DWG#	0Q-6895813-214707118-01
		PG 1	OF 2
		REV	-

REV	DESCRIPTION	BY	DATE				
-	----	--	---/---/---	-	----	--	---/---/---

CKT NO	ACCESSORIES	TYPE	RATING AMP/P
1		QOB	30/2
3			
5		QOB	30/2
7			
9		QOB	30/2
11			
13	BLANK		
15	BLANK		
17	BLANK		



RATING AMP/P	TYPE	ACCESSORIES	CKT NO
		BLANK	2
		BLANK	4
		BLANK	6
		BLANK	8
		BLANK	10
		BLANK	12
		BLANK	14
		BLANK	16
		BLANK	18

PHYSICAL DATA

ENCLOSURE Type 3R/5/12  
 FRONT CAT#: Trim w/Box  
 BOX CAT#: MH38WP

DIMENSIONS:  
 38"(965mm)Hx20"(508mm)Wx6.5"(165mm)D  
 WIRE BENDING SPACE:  
 TOP - 3.25"(83)mm  
 BOTTOM - 11.45"(291)mm  
 SIDE - 6.13"(156)mm

PBA: 711  
 Branch Neutral Lug Material: Aluminum  
 BUSSING: 100A RATED COPPER BUS  
 Silver Plated

OPTIONAL FEATURES:  
 SEISMICALLY QUALIFIED: IBC/ASCE7/CBC/NBCC  
 BRANCH USER PLACEMENT  
 Copper GROUND BAR  
 COPPER SOLID NEUTRAL  
 Maximum Panel Weight 104.  
 Depth Center of Gravity 6.5  
 Elevation Center of Gravity 19.0  
 Vertical Center of Gravity 10.0

---STANDARD EQUIPMENT NAMEPLATE---  
 Engraved as Follows  
 LINE 1: ME  
 (Continued on next page.)

ELECTRICAL DATA

SYSTEM: 208Y/120V 3Ph 4W 60Hz  
 System Ampacity: 60A  
 10kA SYMS. SCCR  
 Fully Rated  
 MAIN: MAIN BREAKER HD 60A  
 Bottom FEED  
 25kA AIR  
 INCOMING CONDUCTORS(S) PER NEC, CEC, NOM:  
 Wire Bending Space:  
 Phase Lugs:1 - #14 - 3/0 AWG  
 Neutral Lugs: One (1) #6-2/0 AWG  
 -----BRANCH SUMMATION-----  
 3 - 30A/2P QOB

JOB NAME: Orion School	EQUIPMENT DESIGNATION: ME
JOB LOCATION:	EQUIPMENT TYPE: NQ (Circuit Breaker Type) PANEL 1 OF 1
DRAWN BY: CAD	DRAWING TYPE: ONE LINE DIAGRAM
ENGR:	<b>SQUARE</b> by Schneider Electric
DATE: April 12 2026	
DRAWING STATUS: QUOTE	DWG# 0Q-6895813-214707119-01   PG 1 OF 2   REV -